



Driving Urban Transitions to a sustainable future



Mobility - Energy - Circularity

DUT Call 2023

People-centred
urban transformation



DUT Call 2023

Topics & participation rules



15-minute City Transition Pathway

Mission and topics

The 15-minute City Pathway

We want to **rethink urban mobility holistically and beyond** the geographic boundaries of cities and thematic silos.

We use the 15-minute City concept as an **attractive narrative and mosaic of policies** and activities to foster the mobility transition.

Thus, it is essential to **explore, test and disseminate different “pathways”** to create 15mC neighbourhoods, in a wide range of cross-sectoral policies for sustainable urban development.

Our focus to drive the urban mobility transition:

AVOID & SHIFT paradigms

4
key
areas

- Sustainable urban mobility
- People-centred urban spaces and planning
- Smart urban logistics, production and service sites
- Urban governance for mobility transition



The 15-minute City Mission

What do we want to achieve?

We contribute significantly to the **transnational learning process on transformation** towards climate neutral, liveable, and inclusive cities.



How do we get there?

We support implementation by facilitating piloting and testing, **mapping, co-creating and disseminating international experience** on 15-minute cities.

We add **10+ innovations every year** to the 15mC Innovation Portfolio, starting in 2025

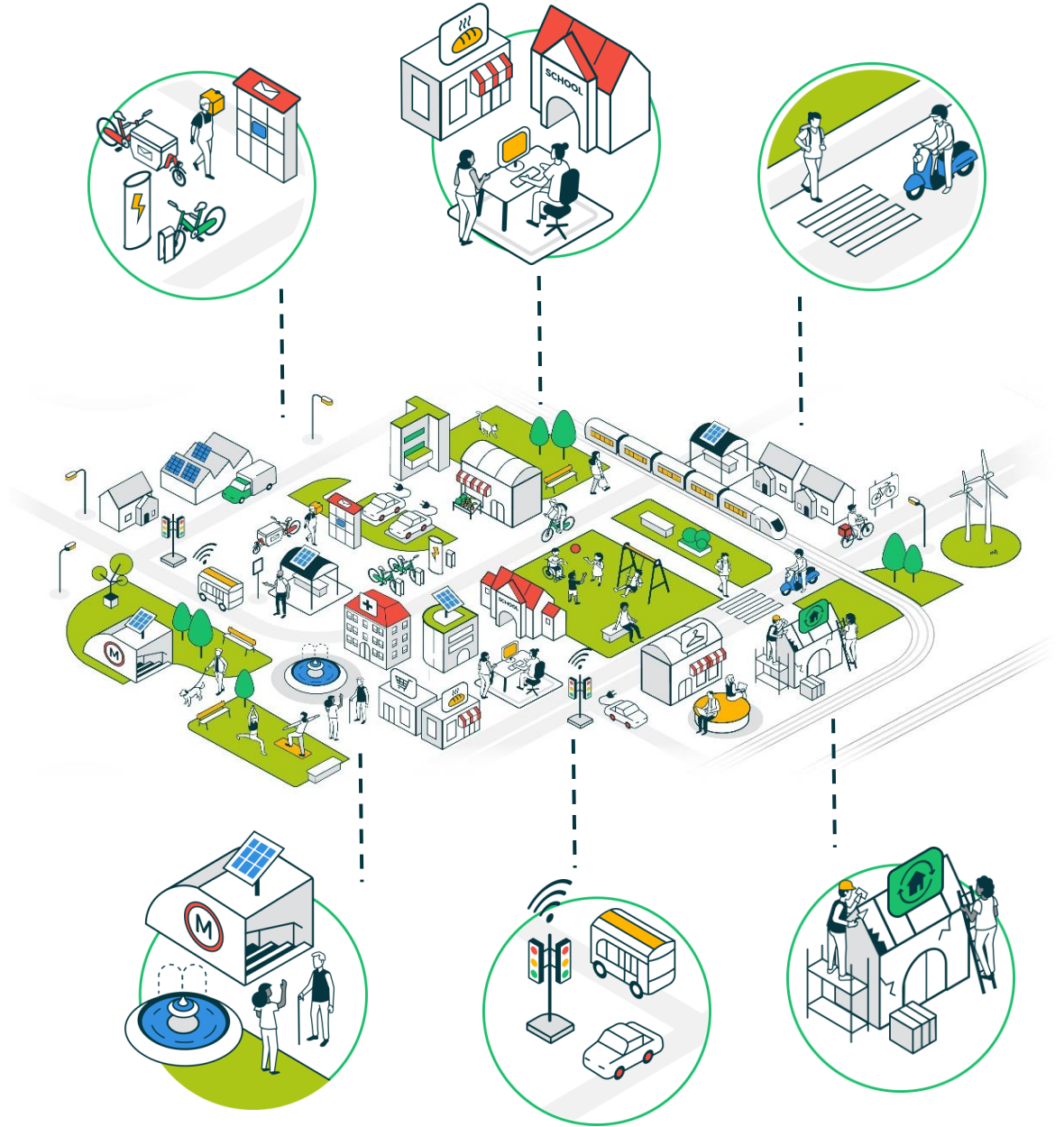


Our mission

We build an open **Innovation Portfolio** and deliver **experience** at the end of the partner-ship of **50+ innovations**

Elements of the 15-minute city

- Receive your deliveries sustainably
- Travel shorter and live a good life in mixed neighbourhoods
- Priority for active mobility
- Attractive options for sustainable mobility in the outskirts
- Apply data for sustainable mobility
- Activate hidden resources in a neighbourhood



DUT Call 2023

15-minute City Call Topics

Topic 1: Integrated Policies and Evidence to Reduce Car-dependency

Topic 2: Mobility and Planning Policies for Proximity-oriented Developments

Topic 3: Empower People for Urban Mobility Transitions

The issue of car-centred planning and resulting car dependency continues to persist in urban areas. The question remains: How can we **open up more leeway to lower existing car dependency**, prepare **evidence** to change **and** identify exemplary cases of **integrated policies** that actively work against it, incentivising individuals and ensuring that no one is left behind?

Given the recent demonstrations of the concept of 15-minute cities, it becomes imperative to **explore methods for actively involving people** in the transition process, **raising awareness, and promoting incentives** for the use of more sustainable modes of transportation.

15mCity: Topic 1

Integrated Policies and Evidence to Reduce Car-dependency

Without doubt, car-dominated mobility systems have negative impacts, such as GHG emissions, air and noise pollution, and inefficient use of public space. But how can car dependency be reduced in urban areas? This topic focuses on the need for integrated and adaptive policies to achieve this goal, combining *push and pull* measures for sustainable transportation and considering interactions and interdependencies. The scope of the topic includes institutional, procedural, social, and technological innovations to transform vehicle flows and parking, with a focus on the *Avoid and Shift* paradigms.

There is also a need for additional evidence and tools to formulate effective action plans and create transparency in relation to the impacts of mobility measures, including monitoring potential unintended effects caused by policies. The expected outputs in this topic include integrated policy packages, toolkits, and knowledge transfer between urban areas of different level of maturity.



15mCity: Topic 2

Mobility and Planning Policies for Proximity-oriented Developments

While today many urban centres already seem to fulfil the criteria of 15-minute neighbourhoods, it is still a big challenge to implement proximity-based concepts in areas of low density and peripheral location. Established centres are also challenged due to an ongoing economic and social transformation. Therefore, this topic explores the contributions of mobility and planning policies and to develop transferable learnings to stabilise and strengthen neighbourhood functions. We want to create more evidence, both on the contribution of combined mobility and planning policies to (balanced) densification and local resilience. We also want to dig to better understand the inhabitants' everyday needs and experience in connection to 15-minute City neighbourhoods.

Projects are encouraged to explore and co-create future scenarios for neighborhood centers, develop explorative solutions for small and mid-size cities as well as less dense or monofunctional urban neighbourhoods. Finally, we invite critical reflections of effects and reach of proximity policies. Expected outputs include methodologies, procedures, and alliances to strengthen neighborhood centers that gather insights into data and tools for 15-minute City planning decisions.

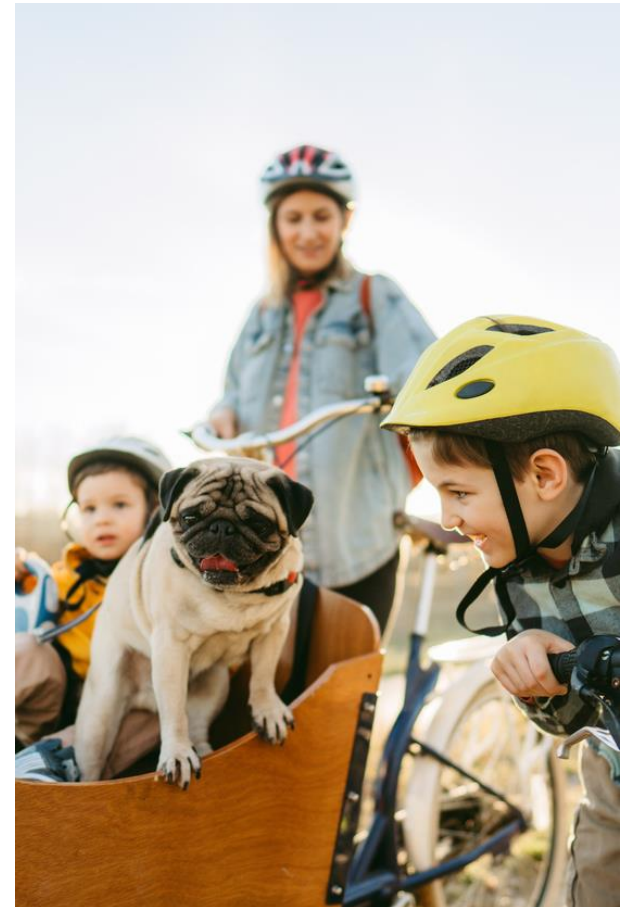


15mCity: Topic 3

Empower People for Urban Mobility Transitions

This topic explores and investigates the role of people in the mobility system and the effects of structural parameters that define much of the daily life in cities. To implement a sustainable urban mobility transition, we need to empower the citizens and involve them in decision-making processes. We already know much about techniques and interventions, however such knowledge needs to be compiled and contextualised to unfold its full potential. Therefore, we need to develop engaging formats and initiatives to reflect on current systemic conditions, and to explore cross-sectoral methods that help imagining possible futures and co-created narratives for the mobility transition.

On a broader level, we need to address and investigate politics and power mechanics as well as existing lock-ins and potential windows of opportunity. Expected outputs include the synthesis of existing knowledge, new methodologies and formats for involvement, evidence, and research on the tough nuts and critical issues of urban mobility transitions.





Positive Energy Districts Transition Pathway

Mission and topics

The PED Transition Pathway ...

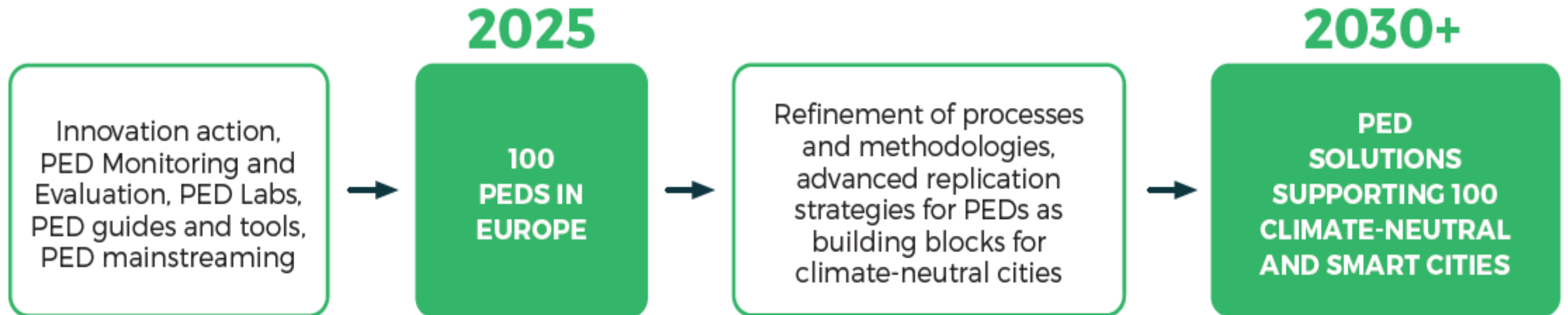
... supports **energy-efficient** and **energy-flexible** urban areas that produce net-zero greenhouse gas emissions while actively managing a high share of locally generated renewable energy.

... supports all players involved to achieve a secure energy supply that supports **social, economic, and environmental sustainability** and a good life for all.

... promotes innovative solutions for planning, large-scale implementation, and replication of PEDs across Europe – with the goal to initialize **100 PEDs in Europe by 2025** and contribute to the Mission on Climate-neutral and Smart Cities with an innovation portfolio of PED solutions until 2030.



The PED Mission



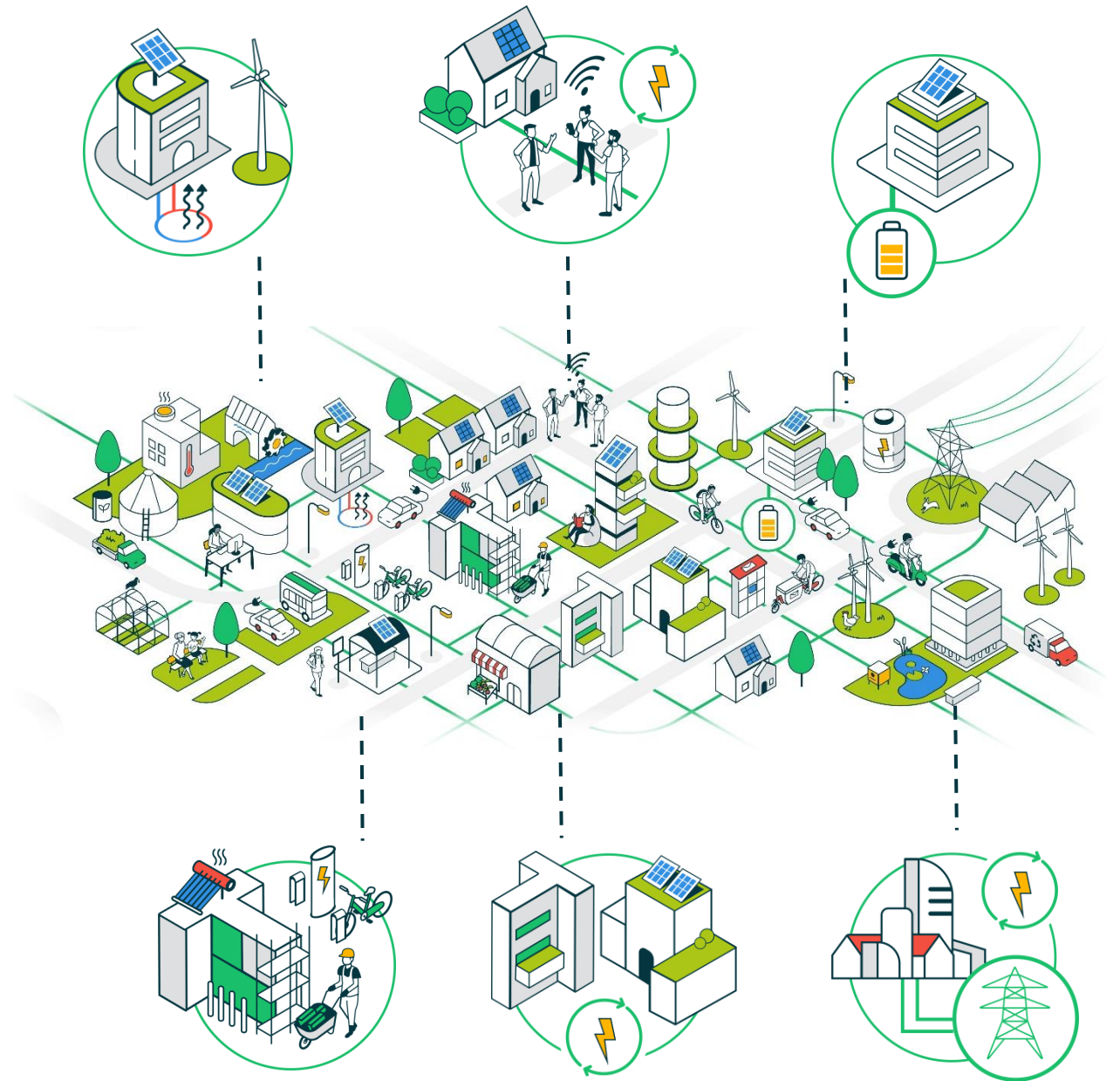
4

key
areas

- ❖ Preparing the energy system for PEDs
- ❖ Integrated (urban) planning
- ❖ Governance / PEDs for people
- ❖ Preparing mainstreaming and replication

PED elements

- Reduce energy demand and implement energy efficiency measures
- Aim for high share of locally generated renewable energy
- Interconnect buildings and infrastructure through energy flows between them
- Provide and integrate facilities for energy storage
- Actively manage energy flexibility and interconnection with the regional energy system
- Energy communities for energy sharing and trading and digital steering of energy use



DUT Call 2023

Positive Energy District (PED) Call Topics

Topic 1: Energy Resilience and Energy Poverty

Topic 2: Urban Regeneration and Refurbishment

Topic 3: Enabling Systems for Local Energy Transitions: Collaboration and Sustainable Investment

Now, more than ever, energy resilience and locally produced energy are gaining significant momentum. We aim to explore ways to ensure that nobody is left behind, focusing not only on the stability of our energy system but also on addressing energy poverty. The energy transition needs to be environmentally effective and at the same time economically feasible and socially sound – in new urban developments and in transforming the existing built environment. This entails finding innovative investment models and incentives to foster collaboration among public authorities, real estate entities, financing institutions, utilities, and homeowners, enabling the implementation and realization of Positive Energy Districts.

PED: Topic 1

Energy Resilience and Energy Poverty

The current energy crisis has highlighted the importance of energy resilience and the social aspects of the energy transition. To address this issue, it is crucial to focus on energy security, affordability, and empowering consumers in the energy transition. Strategies need to consider the social impact and include plans to reduce energy consumption, promote energy efficiency, and support local renewable energy generation. The scope of this topic includes the integration of local energy solutions into the regional energy system, overcoming barriers in the building and energy sectors, as well as multilevel governance and legal frameworks issues. Proposals should provide concepts, assess impact, and develop guidelines for implementation.



PED: Topic 2

Urban Regeneration and Refurbishment

The transformation of the existing built environment to improve energy efficiency and adapt to a warming climate remains a key challenge for the energy transition. The EU Renovation Wave aims to renovate 35 million buildings by 2030. The focus is on process designs for neighbourhood-oriented regeneration processes that transform existing urban structures into net-zero/climate-neutral neighbourhoods. This includes refurbishment and deep retrofitting of buildings, decarbonisation of energy supply systems, and engagement of local actors. Financial and legal challenges, public-private cooperation, social impact and inclusivity are important considerations, with the mobilization of local communities and stakeholders being crucial for comprehensive neighbourhood development.



PED: Topic 3

Enabling Systems for Local Energy Transitions: Collaboration and Sustainable Investment

For a successful energy transition towards climate neutrality, an effective collaboration is crucial between various stakeholders, such as public authorities, the real estate sector, financing institutions, utilities, businesses, and local communities. We are looking for tailored frameworks to explore new models of sustainable investment, balancing public and market dynamics, and developing tools and business models for district-scale energy transitions. This includes defining stakeholder roles, providing recommendations for regulatory frameworks, identifying barriers and proposing solutions, and offering policy recommendations for implementation and replication.





Circular Urban Economies Transition Pathway

Mission and topics

Circular Urban Economies



Cities are characterised by **regenerative urbanism**:

- The natural cycles of the city needs to be restored while supporting a high quality of life to the inhabitants
- A transformative drive towards sustainable, healthy, inclusive and attractive urban spaces
- Regenerative design principles strive towards increasing liveability while reducing environmental footprints and closing material loops

4
key
areas

- Environmental pressures
- Waste creation
- Linear economy
- Socioeconomic Inequalities

The CUE Mission

WHAT DO WE WANT TO ACHIEVE?

Foster the design of urban places characterized by regenerative urbanism, i.e., livable, inclusive, and green communities and neighbourhoods that are sustained by circular urban economies and resource flows.

HOW TO GET THERE?

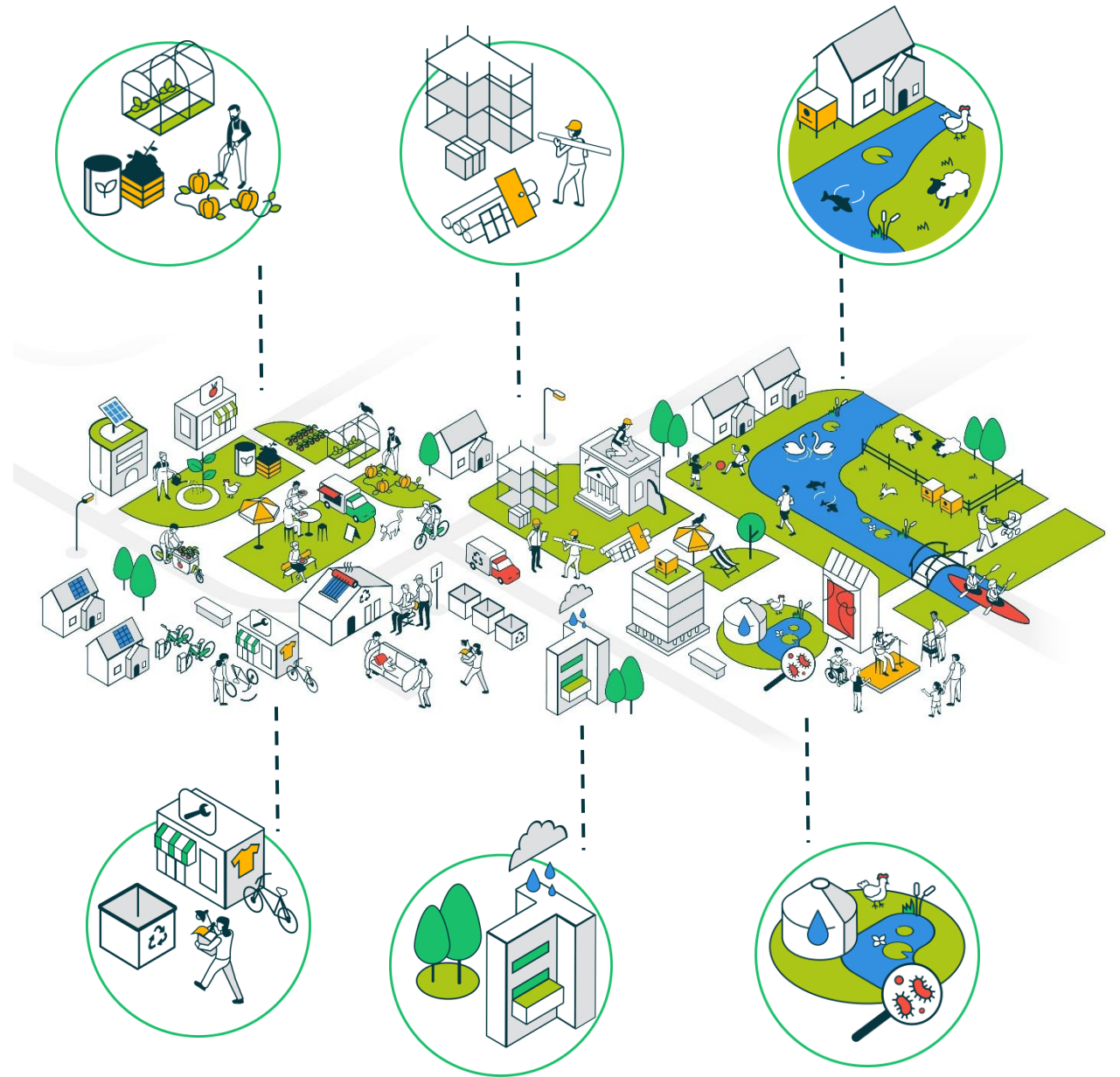
Mapping work to identify criteria, key elements and building blocks for CUE approaches.
Add at least 10 new, improved or adapted solutions per year to a portfolio of circular urban economic innovations.

MISSION

A CUE portfolio with 50+ solutions that contribute to the urban transformation towards regenerative cities.

CUE elements

- Urban food systems reliant on local and regional circular loops
- Construction materials re-used locally and buildings are refurbished and retrofitted
- The city as an enabler of biodiversity
- Resources and tools are shared and maintained locally
- Buildings and infrastructures are climate-proofed
- Blue-green infrastructures are designed to function on nature-based principles



DUT Call 2023

Circular Urban Economies (CUE) Call Topics

Topic 1: The Built Environment as a Resource Base

Topic 2: Knowledge and optimisation of resources flows between urban and rural areas

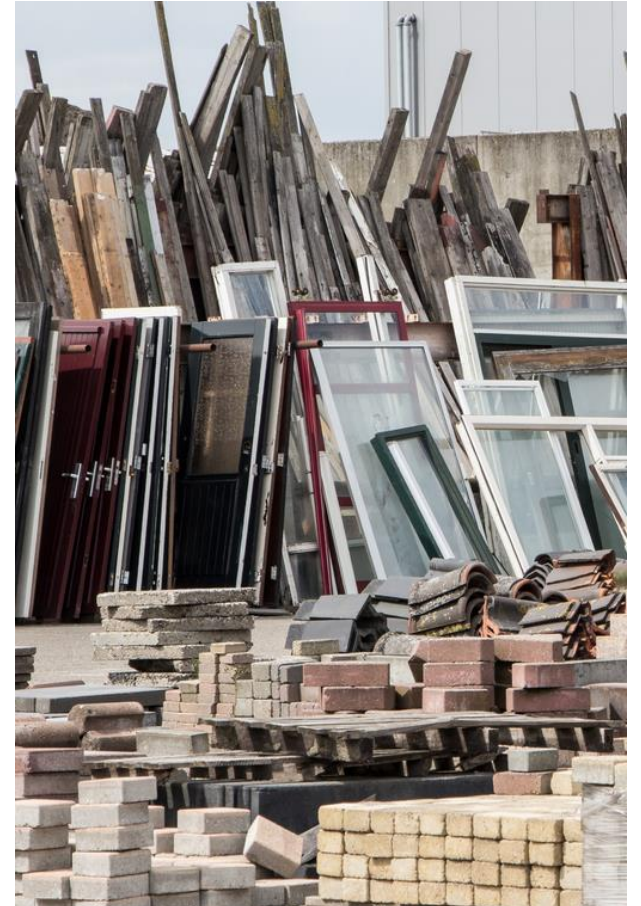
Topic 3: Planning and Designing urban areas with Nature: Towards a Regenerative Urbanism

We need to understand how we utilize the existing building stock both by recycling and reusing its materials in new constructions, and by refurbishing and renovating buildings to extend their lifespans while keeping their social and aesthetic qualities. Furthermore, we need to investigate how cities can enhance their connections between urban and rural areas to facilitate and manage sustainable flows of food, water, and waste. Additionally, in this year's call, plans and design approaches that integrate nature into the existing building stock of our cities are also in focus.

CUE: Topic 1

The Built Environment as a Resource Base

This topic discusses the challenge of improving resource efficiency in cities, being part of a circular economy. It highlights the potential of urban mining to prevent the consumption of resources and reduce negative environmental and social impacts. A lack of knowledge and data on waste creation from the built environment is identified as a significant issue. There is a need for innovative ideas centred around reuse and recycling, and new and alternative solutions to help reduce cities' emissions and transform the built environment. This includes creating spaces for reusing and recycling, as well as optimising the reuse of materials through matchmaking between supply and demand. The use of data, tools and methods for tracing and analysing material flows is crucial. The use of existing resources and exploring alternative materials, methods and techniques can contribute to a circular built environment – cooperation within the building industry and between public and private sectors is key. Expected outputs include tools and guidelines for calculating and valuing the impact of materials, incentives for choosing sustainable materials, and knowledge on preserving and developing the existing building stock.



CUE: Topic 2

Knowledge and Optimisation of Resources Flows between Urban and Rural Areas

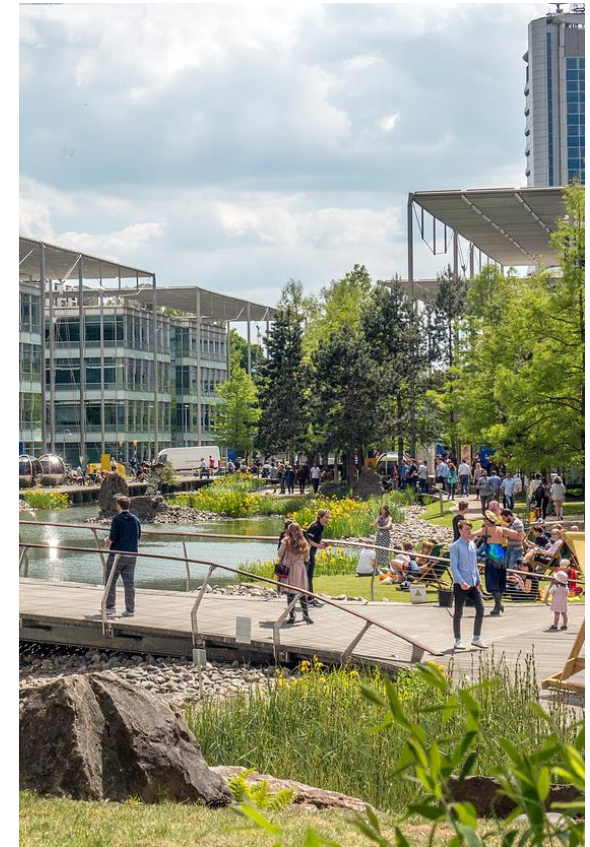
How can we optimise resource flows between urban and rural areas? Efficient planning and design, as well as cross-administrative and regional cooperation, are crucial for achieving this. This topic highlights the importance of connections between urban and rural areas, particularly in terms of food production and access to resources. It also emphasises the need for better management of waste, water and sewerage, as well as changes in consumption habits and behaviours. Project proposals need to address key issues, such as how to improve resource reuse and recycling, how to promote local solutions for better agrifood and transportation systems, and how to better understand and manage resource flows. Expected outputs include new solutions for circular urban and rural flows, improved understanding and management of resource flows, and insights into the dynamics of urban and rural spaces.



CUE: Topic 3

Planning and Designing Urban Areas with Nature: Towards a Regenerative Urbanism

This topic focuses on measures to mitigate the potential degrading effects of urbanisation, that prevent provision of crucial ecosystem services and habitat needs. Mitigation, adaptation and designing with nature, are key in addressing these challenges, reducing the environmental impact of the building sector and built environment and fostering urban liveability, essential for achieving regenerative neighbourhoods. There is also an environmental justice component to this issue, and designing with nature must be done with equality, diversity and inclusion aspects in mind. Designing with nature requires political, financial and public support from across different levels of society. Proposals are expected to explore different methods of designing with nature, at a variety of scales. Furthermore, they are asked to consider barriers, and the role of architecture and design, indigenous, traditional, and local knowledge in creating opportunities, in parallel with governance, financial, societal structures, and scientific and technical understanding of designing with nature. Expected outputs include building on good practice, developing tools, strategies and policy recommendations, and encouraging active engagement from the cultural and creative sectors.



Mobility - Energy - Circularity

DUT Call 2023

People-centred urban transformation

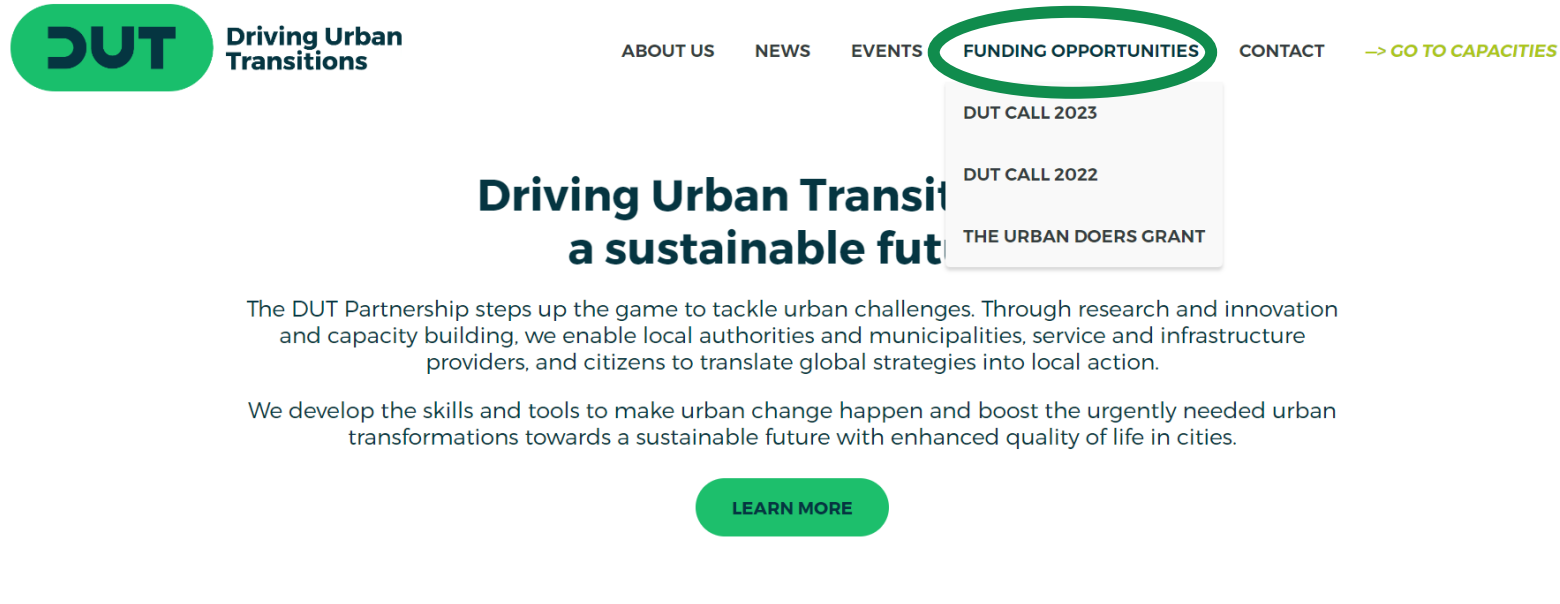


General aspects of the DUT Call 2023

Call timeline, rules and how to apply

Publication of call text

DUT Website: <https://dutpartnership.eu/funding-opportunities/>



The image shows a screenshot of the DUT website's navigation menu. The menu items are: ABOUT US, NEWS, EVENTS, FUNDING OPPORTUNITIES, and CONTACT. The 'FUNDING OPPORTUNITIES' item is circled in green. Below it, a dropdown menu is visible with the following items: DUT CALL 2023, DUT CALL 2022, and THE URBAN DOERS GRANT. To the right of the menu, there is a link that says '→ GO TO CAPACITIES'. The DUT logo and 'Driving Urban Transitions' text are visible in the top left corner of the screenshot. Below the navigation menu, the main content area of the website is partially visible, showing the heading 'Driving Urban Transitions a sustainable future' and two paragraphs of text. A green 'LEARN MORE' button is located at the bottom of the screenshot.

DUT Driving Urban Transitions

ABOUT US NEWS EVENTS **FUNDING OPPORTUNITIES** CONTACT → GO TO CAPACITIES

DUT CALL 2023
DUT CALL 2022
THE URBAN DOERS GRANT

Driving Urban Transitions a sustainable future

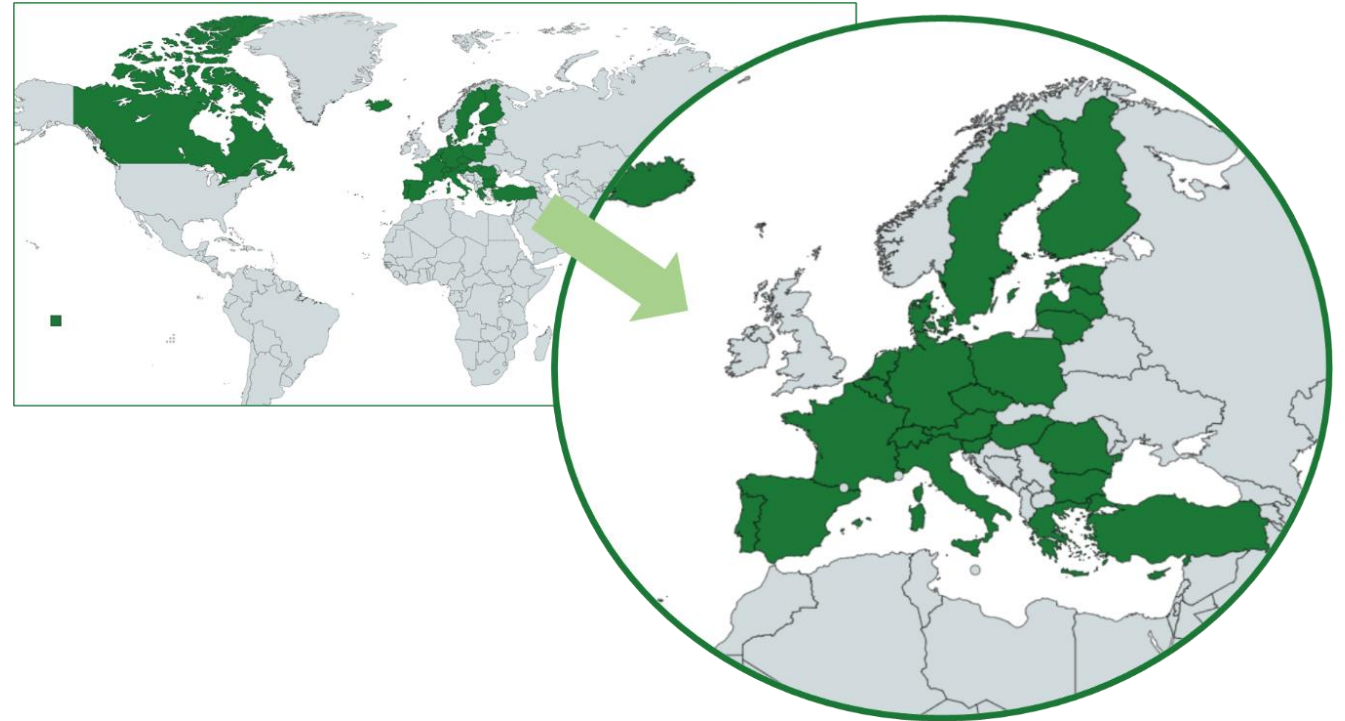
The DUT Partnership steps up the game to tackle urban challenges. Through research and innovation and capacity building, we enable local authorities and municipalities, service and infrastructure providers, and citizens to translate global strategies into local action.

We develop the skills and tools to make urban change happen and boost the urgently needed urban transformations towards a sustainable future with enhanced quality of life in cities.

[LEARN MORE](#)

Participating countries and regions

- Austria
- Belgium
- Bulgaria
- Canada / Quebec
- Cyprus
- Czech Republic
- Denmark
- Estonia
- Finland
- France
- Germany
- Greece
- Hungary
- Iceland
- Italy
- Latvia
- Lithuania
- Netherlands
- Poland
- Portugal
- Romania
- Slovenia
- Spain
- Sweden
- Switzerland
- Türkiye



Participating countries and regions

Note!

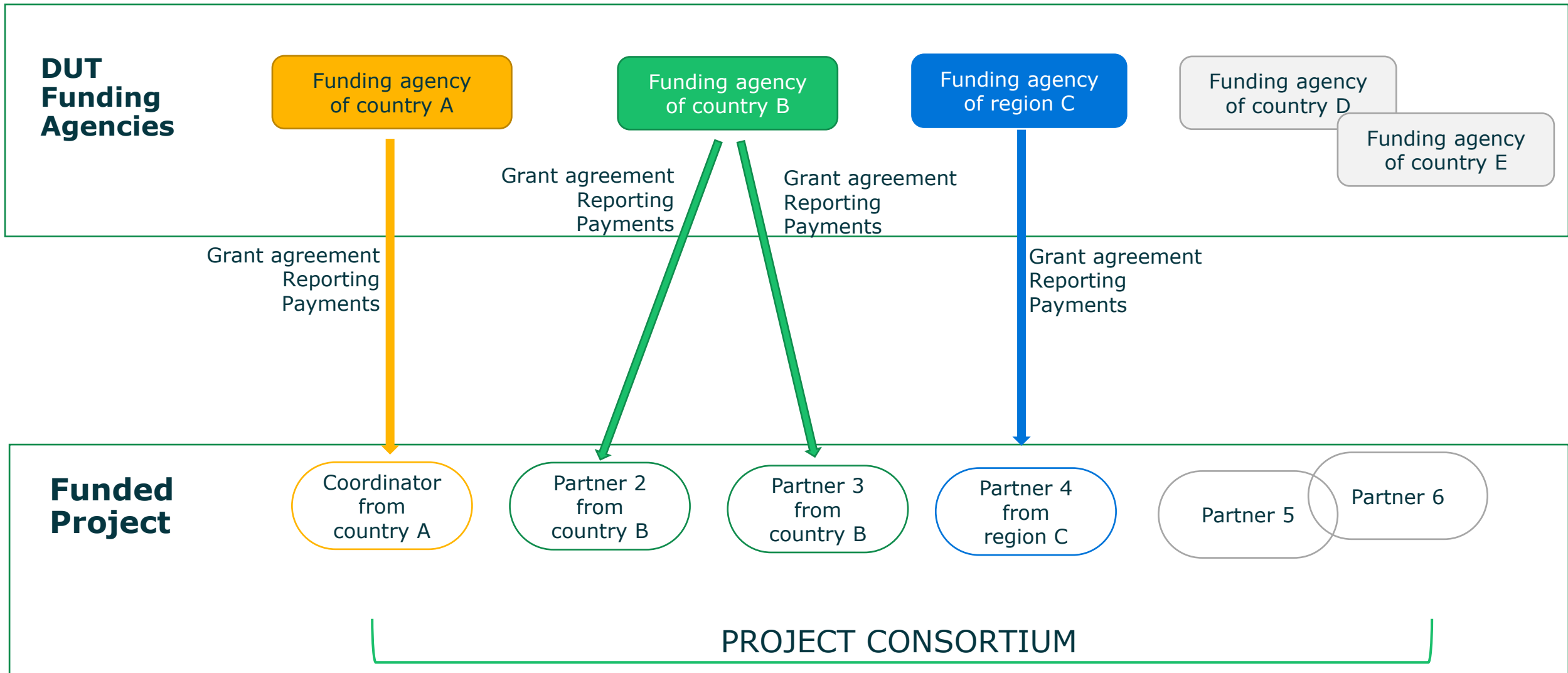
- Please be well aware that **not every Funding Agency** in every country supports every research type and every pathway and topic.
- When building a consortium, pay attention to Table 1 and Table 2 of Annex A, and the information listed for each country in the Annex A.
- When building consortia, the national budgets and the number of projects that may be funded are a key information in Annex A!

Call budget

- ❖ The total **national budgets** dedicated to the call is over **EUR 60 million**;
- ❖ The EC will support the Partnership and its first two calls with up to **EUR 37 million (cofund)**;

Transnational project structure

Fictional example of linking of a project to different funding agencies



Call structure

Transnational Part (2 Stages)

Stage 1: Pre-proposal

Submission of a pre-proposal, including a concise project description as well as a description of the partners. If the pre-proposal is selected, the project consortium is invited to submit a full proposal.

Stage 2: Full proposal

Submission of a full proposal, only if the pre-proposal is invited to participate in Stage 2.

National/Regional Part

- All project partners will be evaluated according to national/regional eligibility criteria and requirements.
- **Important!** Some Funding Agencies require submission of a proposal on national/regional level. See the respective national/regional requirements for more information.

DUT Call 2023 - Timeline





Who can apply



Research organisations

Higher education institutions including universities, university colleges;
Research institutes or other entities with research undertakings;



Urban government authorities

such as regional and local government institutions, municipalities and municipal organisations, city authorities, urban public administrations, and infrastructure and service providers;



Companies

and commercial organisations;



From the culture and creative sectors

e.g., artists and designers



Consumers and civil society representatives

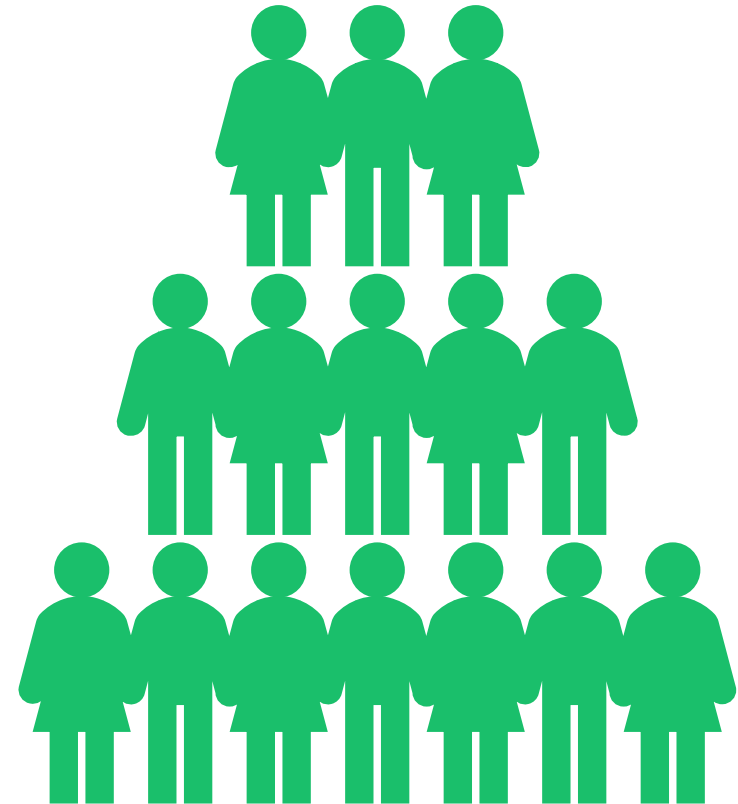
such as local and community organisations, non-governmental organisations, not-for-profit organisations, citizens' representatives;

IMPORTANT!

Please be well aware that not every Funding Agency in every country may fund every organisation type. Organisation types that can be funded may also differ for research types, pathways and even topics in one country or region. When building a consortium pay attention to table 1 in Annex A and the information listed for each country in the Annex A.

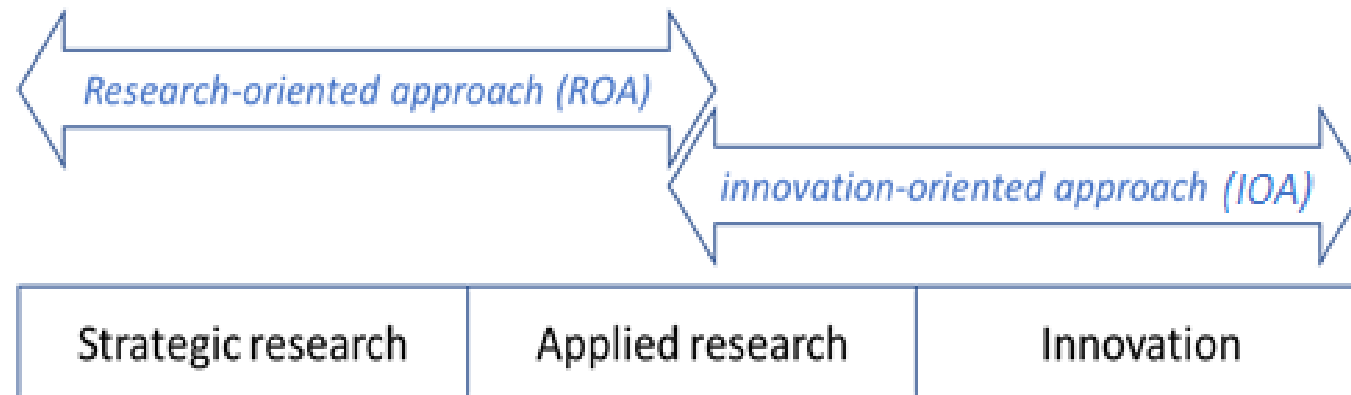
Who can apply – roles in a consortium

- The **Main Applicant** is the organization/body responsible for coordinating and managing the project.
- **Co-applicants** are Applicants other than the Main Applicant, eligible for funding from a Funding Agency.
- **Co-operation Partners** are partners that are not eligible for funding from Funding Agencies, but may be included in a project as Co-operation Partners if (a) they finance their activity from other sources and (b) the consortium in general fulfils the requirements on the number of eligible applicants from participating countries
- **Principle Investigators (PI)** are the **persons** acting as lead investigator for a main applicant or co-applicant



Types of research & innovation activities

- **Strategic urban research**
- **Applied urban research**
- **Urban innovation and implementation**
- Projects may address one or two of these research types and must additionally select one approach: **either research-oriented** or **innovation-oriented**



Transnational eligibility criteria *Summary - 1*

1. Only **transnational projects** will be funded; consortia must include at least **three independent legal entities** applying for funding from **three different countries** that have Funding Agencies participating in the call. In addition, at least two eligible Applicants within a consortia must be from different EU Member States or Associated Countries eligible for EC co-funding in this Call.
2. The project coordinator (**Main Applicant**) must be **eligible** to be funded by its **national/regional** participating **Funding Agency** and request funding.
3. One person must only participate in a **maximum of two proposals** as a PI, and only once as the PI of a Main Applicant.
4. Each consortium must include at least **one urban government authority partner**, either as a Main Applicant, Co-applicant or Cooperation Partner, depending on the national/regional eligibility criteria.
5. The duration of a project must not exceed 36 months.

Transnational eligibility criteria *Summary - 2*

6. Pre-proposals/full-proposals must be written in **English language** and respect the designated mandatory **proposal form** (in terms of overall size, limit of pages and characters). The proposal form must be completely filled in, respect standard font size and margins indicated in the form.
7. Pre-proposals/full-proposals have to be submitted on the UEFISCDI electronic submission system UDiManager **before the corresponding deadlines** indicated in this document.
8. Only pre-proposals **invited** to submit a full proposal will be eligible in the second stage of the selection procedure. If a Main Applicant decides to submit a full proposal rejected at the end of the first stage, this full proposal will be declared ineligible.
9. **Fundamental changes** between the pre-proposal and the full-proposal, initiated by the applicants alone, will **NOT** be accepted.

National/regional rules may be more restrictive regarding this eligibility criterion.

National/regional eligibility conditions

Please check carefully the specific national/regional eligibility requirements of each funding agency for which you are applying for funding. They are indicated in the (long) Annex A of the Call Text.

There is a specific table for each funding agency. These conditions may relate to

- the type of eligible partners (research organisations, private sector, NGO, local authorities, etc)
- the types, rates and amounts of expenses accepted
- the topics of the call that the funding agency will support
- the type(s) of research and innovation activities supported
- the fact that the submission of an application is expected at national/regional level
- etc.

It is strongly recommended to check these national/regional rules with the contact person at the respective Funding Agency (see **Annex A**) before submitting a proposal. For some funding agencies, it is even mandatory to have this contact before the submission.

Applicable project criteria – FICTIONAL Example

TRANSNATIONAL CRITERIA

- > Only transnational projects will be funded; consortia must include at least three independent legal entities applying for funding from three different countries ...
- > other transnational criteria ...

NATIONAL CRITERIA (FICTIONAL)

Country A

- > Consortium must include a company
- > For country A only research organisations, universities and companies are eligible for funding

Country B

- > At least 2 municipalities in the consortium
- > National application must be submitted until 10 January

Country C

- > For country C municipalities are not eligible for funding

Country D

- > One person may only be nominated as PI in one proposal

**The national criteria shown here are fictional,
please always contact your funding agency!**

Project consortia – FICTIONAL example

Main Applicant

University of Sustainability

Country B

PI of the main applicant: Julia Expert

Co-applicant

Urban Enterprises

Country A

PI: Julius Master

Co-applicant

City of Green

Country C

PI: unknown

Cooperation partner

Municipality of Accesso

Country Z



LOI concretely stating how they will be involved in the project and how they will profit and partake from/in project results submitted online

Cooperation partner

Hamlet of Blankwood

Country A



LOI concretely stating how they will be involved in the project and how they will profit and partake from/in project results submitted online

Project consortia - fictional example

- Are all consortium partners listed in this example eligible on a **national level**?
- Is the consortium and the application eligible on a **transnational level**?

Please check with the Funding Agencies of Country A, B and C

Evaluation and selection process

- Two-stage process:
 - pre-proposal
 - full-detailed proposal
 - Evaluation by international, independent expert panel at both stages.
 - Evaluation of expert panel will result in six ranking lists corresponding each to a specific Transition Pathway and ROA or IOA;
 - Selection by a steering committee representing the funding agencies, based on the ranking lists and the available national/regional budgets committed to the Call.
- Selection choices crucial for your project:**
- Choose the most relevant transition pathway;
 - R&I approach: research-oriented approach (ROA) or innovation-oriented approach (IOA)

TP	Research-oriented approach (ROA)	Innovation-oriented approach (IOA)
PED TP	Ranking list PED + ROA	Ranking list PED + IOA
15minC TP	Ranking list 15mC + ROA	Ranking list 15mC + IOA
CUE TP	Ranking list CUE + ROA	Ranking list CUE + IOA

Evaluation criteria

The pre-proposals and full proposals will be assessed by a **panel of experts** against the three standard **sets of criteria**:

- 1) *Excellence and Intellectual Merit*
- 2) *Impact and User Engagement*
- 3) *Quality and Efficiency of project implementation*

Evaluation scores over 5 will be awarded for each of the three criteria.

Criteria are decomposed into **sub-criteria**:

- Some sub-criteria will not be assessed in Stage 1, but only in Stage 2 (*italic in the following slides*).
- Some sub-criteria are specific to the research-oriented or to the innovation-approach.

Evaluation criteria (1)

Excellence – Intellectual Merit

- Clarity and pertinence of the objectives
- Credibility of the proposed approach and soundness of the concept
- Added value of transnational co-operation
- *Clarity and feasibility of the project design and of the proposed methodology**
- *Identification of risks and mitigation plan**

Sub-criteria adapted to ROA:

Originality, contribution to new strategic knowledge, progress beyond the state-of-the-art

Sub-criteria adapted to IOA:

Innovativeness of the approach compared to existing solutions

Evaluation criteria (2)

Impact and User Engagement (societal and broader impacts of project results)

- Relevance to the call topics
- Integration of diversity and gender perspectives in the project plan and goals when applicable
- Engagement of stakeholders (e.g. communities, cities, policy makers, regulators, NGOs, or industry)
- *Effectiveness of the proposed measures for the dissemination and/or exploitation of project results (*)*

Sub-criteria adapted to ROA:

*Potential of the project to provide insights to an important societal issue and produce useful knowledge for stakeholders**

Sub-criteria adapted to IOA:

*Market potential of the project and/or capacity to respond to a demand or a need**

Evaluation criteria (3)

Quality and Efficiency of project implementation

- Composition, quality, and suitability of experience and expertise of the consortium to address the project goals (including interdisciplinarity, cross-sectorial collaboration, and co-creation aspects where relevant)
- Complementarity and balance of substantial contributions of partners of the consortium
- Feasibility and appropriateness of timescale
- Global value for money (costs are realistic and reasonable with respect to the ambition of the project and the expected results and impact)
- *Appropriateness of costs allocation and justification of requested resources (staff, equipment, etc.)**
- *Appropriateness of the allocation of tasks and workloads, ensuring that all participants have a valid role and adequate resources in the project to fulfil that role **
- *Appropriateness of the management structures and procedures, including risk, quality, and innovation management**
- *Consideration of regulatory and ethics issues, when necessary**

Partnering support

The DUT Call requires project consortia from at least

- **three independent legal entities**, applying for funding from
- **three different countries** that have Funding Agencies participating in the call;
- **two eligible Applicants** within the consortium must be **from different EU Member States** or Associated Countries eligible for EC co-funding for this Call



**Use the Matchmaking
Platform for DUT Call 2023**

<https://dut-call-2023.b2match.io>

DUT Matchmaking Platform to identify and meet potential projects partners

(1) Registration

Register on the DUT Matchmaking Platform via the [Register](#) button.

(2) Publish a business profile to showcase your needs

Create a clear and concise business profile to raise your visibility on the b2match platform. Your profile should describe who you are, what you can offer to potential partners, and who you want to meet. A good profile will generate significantly more meeting requests.


(3) Browse profiles of attendees

Go to the [participants list](#) to find out who is offering interesting and promising business opportunities.


(4) Send & receive meeting requests

Browse [published participants profiles](#) and send meeting requests to those you want to meet during the event.

Create a strong profile



Linda Danell
Project manager at Trollhättans stad



City Authority / Municipality / Region / Participant
Trollhättans stad

The municipality of Trollhättan is located in the south west of Sweden and has approx. 59 000 inhabitants. The municipality has a great history in engineering, such as car and airplane production. Swedens next biggest city, Gothenburg, can be reached within 30 minutes by train.

AREA OF ACTIVITY

PED Topic 1: Energy communities – energy transition driven by civil society

PED Topic 2: Energy flexibility strategies – technological, legal, societal challenges

PED Topic 3: Energy efficiency in existing urban structures

15mC topic 2: Foster sustainable options for personal mobility and logistics in urban outskirts (and beyond)

15mC topic 3: (Re)imagine urban public spaces and streets for vibrant, sustainable neighbourhoods

CUE topic 1: Urban Resource Sharing and Circularity CUE topic 2: Nature-based solutions (NBS)

Registered on September 09, 2022

OPPORTUNITIES

PROJECT COOPERATION

Looking for projects!

The municipality of Trollhättan and its Urban Development Department are looking for partners to cooperate with! We have a strong focus on transformation and innovation and are open to explore a wide range of opportunities within the field of sustainable urban development and SDG 11.

- Add at least one **Project Cooperation** in the OPPORTUNITIES section!
- Describe your **project idea, aim, expertise & type of partner sought**
- Strong profiles enormously facilitates the partner search on the platform!


Be active – screen the online profiles and request meetings!

Participants Relevance ▾

PERSON ORGANIZATION




82 Participants found




Search

BOOKMARKED 

MATCHMAKING

PARTICIPATION TYPES

 **Larissa Beutler**
Innosuisse
BERN, SWITZERLAND
[View full profile →](#)  [Request meeting](#) 

 **Martijn van den Hurk**
Assistant professor of Spatial Planning a...
UTRECHT, NETHERLANDS
[View full profile →](#)  [Request meeting](#) 

Useful links

DUT Website

www.dutpartnership.eu

DUT Call text available at

https://dutpartnership.eu/dut_call_2023

DUT Matchmaking Platform

<https://dut-call-2023.b2match.io>

Call Management

call@dutpartnership.eu

Also consult with your national contact point indicated in Annex A;

Important dates

Stage 1 opens (pre-proposal submission)	1 September 2023
Info day #1 – info session (online)	12 September 2023 10:00-14:00 CET
Info day #2 – project pitches (online)	10 October 2023
Stage 1 closing (pre-proposal submission deadline)	21 November 2023, 13:00 CET
Eligibility check	December 2023
Meeting of Expert Panel to assess pre-proposals	February 2024
Stage 2 opening (invite applicants to submit full proposals)	February 2024
Stage 2 closing (deadline submission of full proposals)	30 April 2024, 13:00 CET
Eligibility check	May 2024
Meeting of Expert Panel to assess full proposals	June 2024
Funding decisions announced	July 2024
Start of the projects	September 2024 – January 2025
Projects’ kick-off meeting	2025 (<i>tbd</i>)

DUT

Driving Urban
Transitions



Good luck for your application!

Follow us on



https://twitter.com/DUT_Partnership



<https://www.linkedin.com/company/dut-partnership>